



[www.kings-group.net](http://www.kings-group.net)


248 Hoe Street  
Walthamstow E17 3AX  
Tel: 020 8521 1122


Brookfield Avenue, London, E17 9ER  
£1,900 Per Month

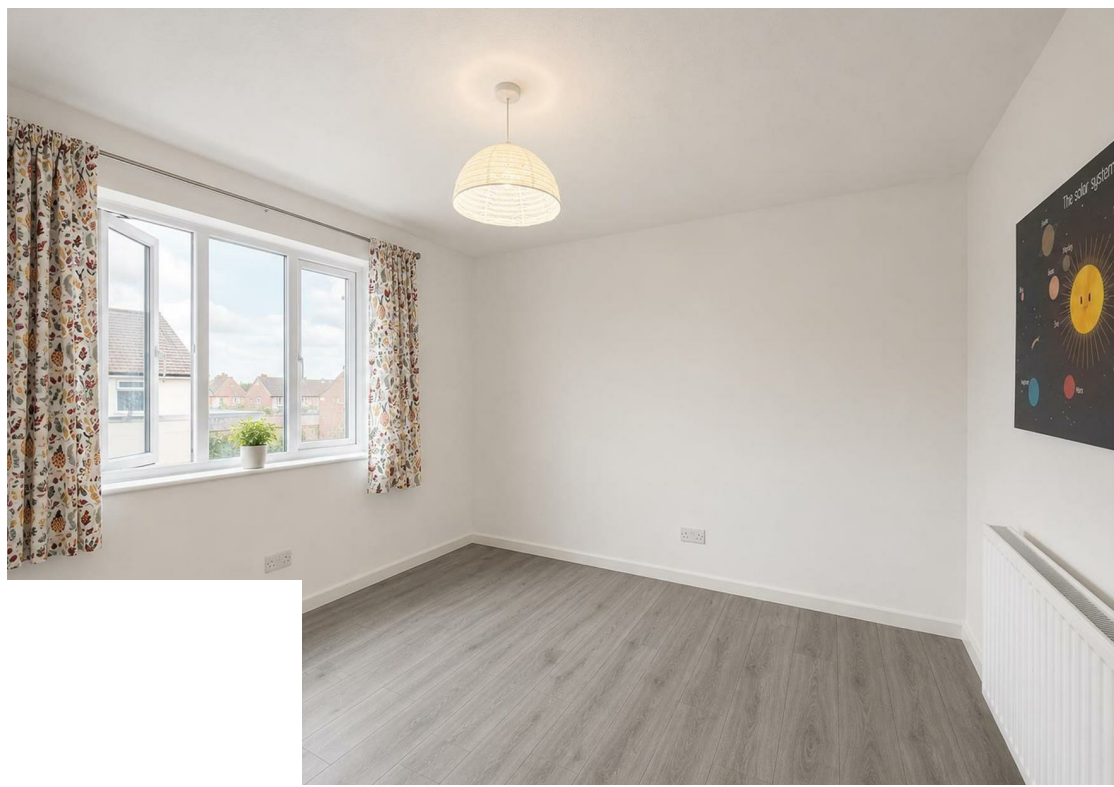
A fantastic two bedroom flat, situated on Brookfield Avenue. Brilliantly located just a short walk from both Walthamstow Village and Wood Street, you'll benefit from a fantastic selection of independent shops, cafés and eateries right on your doorstep, alongside excellent transport links into Central London.

Both bedrooms are generously sized and filled with natural light, offering ample space for freestanding storage. The property also features a modern fitted kitchen, a stylish three-piece family bathroom, and a bright, welcoming reception room — ideal for relaxing or entertaining.



Energy Efficiency Rating		
	Current	Potential
<i>Vary energy efficient - lower running costs</i>		
(92 plus) <b>A</b>		
(81-91) <b>B</b>		
(69-80) <b>C</b>		
(55-68) <b>D</b>		
(39-54) <b>E</b>		
(21-38) <b>F</b>		
(1-20) <b>G</b>		
<i>Not energy efficient - higher running costs</i>		
<b>England &amp; Wales</b>	EU Directive 2002/91/EC	

Environmental Impact (CO <sub>2</sub> ) Rating		
	Current	Potential
<i>Vary environmentally friendly - lower CO2 emissions</i>		
(92 plus) <b>A</b>		
(81-91) <b>B</b>		
(69-80) <b>C</b>		
(55-68) <b>D</b>		
(39-54) <b>E</b>		
(21-38) <b>F</b>		
(1-20) <b>G</b>		
<i>Not environmentally friendly - higher CO2 emissions</i>		
<b>England &amp; Wales</b>	EU Directive 2002/91/EC	







Associated Offices in London, Essex and Hertfordshire  
Kings Head Office Tudor Lodge, Burton Lane, Goffs Oak, Hertfordshire EN7 6SY Tel: 01707-872000

